

# NatrX Lattice

**Dimensions:** 3ft (L) x 3ft (W) x 3ft (H)

**Weight:** 1,600 lbs

**Surface Area:** 82ft<sup>2</sup>

## KEY BENEFITS

A Natrx Lattice solution provides a range of practical benefits through planning, installation, and ongoing performance.

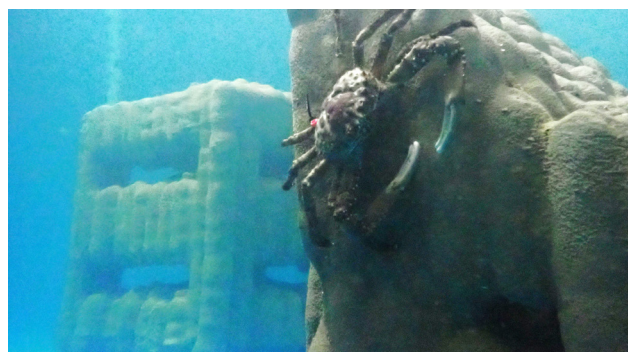
- Natrx Lattice solutions use up to 90% less material compared with rock solutions
- Reduced bottom impact by up to 80%
- Less bearing pressure on weak soils
- Straightforward planning and permitting
- Modularity allows for easy installation and adjustments
- Naturalistic appearance blends in seamlessly with surroundings
- Up to 50% increase in surface area compared with breakwaters and seawalls promotes biodiversity
- Designed to be hydro-dynamically stable

## APPLICATIONS

- Ideal for medium wave energy environments
- Useful in riverine environments, artificial reefs, any site that requires asset protection
- Versatile marine and terrestrial applications
- Void spaces can be specifically tailored for desired water flow
- Ecological feature on breakwaters, jetties, seawalls

## INSTALLATION

Lattice structures can be installed with minimal heavy equipment necessary—far less than equipment needed for a rock solution.



“I like the design of Natrx ExoForms. The beauty of them is that they’re very safe to operate around and very easy to install. ”

Ron Gorton  
Golden Oyster Marine Services

### HOW TO PURCHASE

We pride ourselves on our ability to deliver high-quality solutions on-time and with transparent pricing. We can design a solution and develop a quote for your project with you directly or through your contractor.

### PRICING

ExoForm solutions are engineered to achieve project goals while delivering an additional range of functional and ecological co-benefits at a cost that’s comparable to traditional approaches. With ExoForms we can design the most cost-effective solution for addressing your challenges.

### PROJECT INPUT:

Provide us with a general sense of the parameters of your project, your challenges, and your goals and we’ll design and deliver the ExoForm solution that’s best for your site.

PROJECT SITE SIZE: \_\_\_\_\_

PROJECT TIMELINE: \_\_\_\_\_

PROJECT GOAL(S): \_\_\_\_\_

\_\_\_\_\_

WHAT DOES SUCCESS LOOK LIKE? \_\_\_\_\_

\_\_\_\_\_

NOTES: \_\_\_\_\_

\_\_\_\_\_

\_\_\_\_\_

\_\_\_\_\_

## Implementing an ExoForm Solution:

Natrx ExoForms solutions are designed for safe, fast, and efficient installation saving your project valuable time and cost. The process for using Natrx ExoForms is straightforward:

- 1 Get in touch with us to discuss the specifics of your project so we can determine the optimal ExoForm™ solution
- 2 Working from your input, we’ll design the ExoForms for your project
- 3 Upon approval and initial payment, your order will enter our production queue and a delivery date and logistics is organized
- 4 Your ExoForms are delivered to your project site for quick and easy installation. That’s it.

## GET STARTED WITH NATRX

Our solutions are designed for straightforward implementation and we’re here to answer any questions:

 (919) 263-0667

 [info@natrx.io](mailto:info@natrx.io)

 [natrx.io](http://natrx.io)