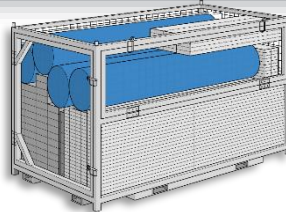
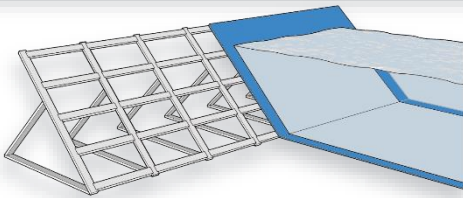


FloodDefender™



The Portadam team has an extensive history of successfully providing solutions that prevent damage from flood waters. The Portadam FloodDefender™ system can be used to divert floodwaters away from key infrastructure such as healthcare facilities, emergency response centers, treatment plants, power plants, substations, and reservoirs. Existing levees/berms can be extended to increase the protective height with the system. It is one-tenth the weight of standard sandbag extensions and installs in a fraction of the amount of time with minimal labor.

Example: 150 linear feet of 48" protection can be installed by a crew of 4 in an hour or less



The design and engineering of the equipment enables rapid deployment on any surface and along almost any desired line. Normal facility/plant operations can continue during deployment.

The standard equipment is offered in various heights for typical measures of protection that can be stored compactly near to the critical asset.

Example: 150 linear feet of 48" protection stored in a single, portable, stackable crate

Key Advantages

- No water or sand to procure, fill or dispose
- Easy, Rapid Deployment
- Engineered for compact storage
- Less manpower and equipment for setup/removal than sandbags
- Modular design allows custom layout
- Designed, Engineered and Manufactured in the USA
- US Patent #11,486,107



Portadam, Inc.
(856) 740-0606
sales@portadam.com
www.portadam.com